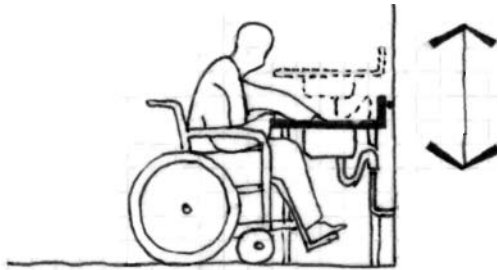


Accessible Laboratory

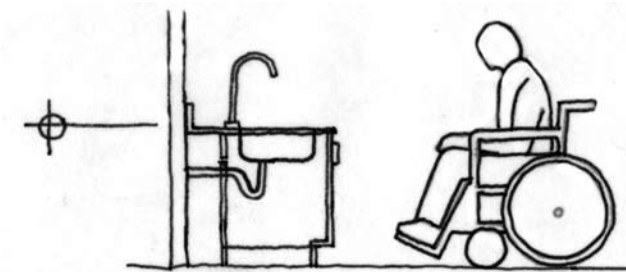
Beyond ADA - Guidelines for Universal Access

Sinks and Equipment

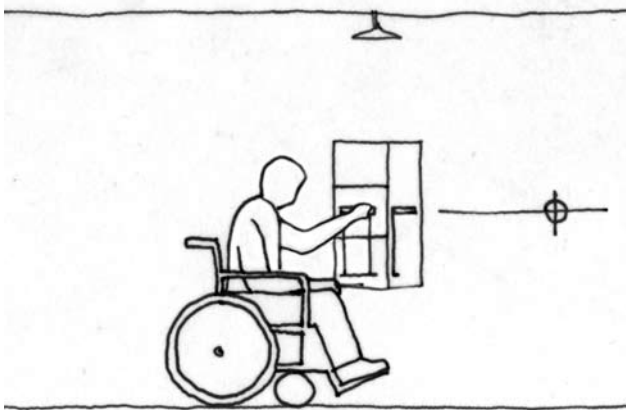
- Sinks in tables
- ADA cabinets – with toe kick
- Emergency Shower/ Eyewash



Locating sinks in stand alone tables prevents complications with base, and the buildup of clutter in ADA cabinets. When sinks are located in adaptable tables as outlined above, they may become even more useable to all occupants and situations. We recommend that lab sinks be located alone in standing tables with no cabinets below.



If lower cabinets are required, incorporate the entire cabinet façade into necessary accessibility elements. Attaching the toe-kick and reveal to the front panel doors allows the ADA sink to architecturally match the adjacent counter and cabinet system. Alternately, an integral toe-kick may be incorporated into a lift up shelf to trap cover, which can be lifted when required by a physically challenged user. Most lab casework manufacturers make these systems



Where facilities dictate shower and eyewash stations careful consideration must be given to selecting an accessible station. This means that all manually operated elements must be below 48", and easily graspable. Eyewashes and showers are unusable without proper wheelchair clearances.

