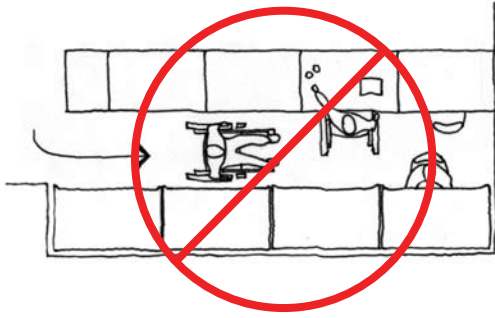


# Accessible Laboratory

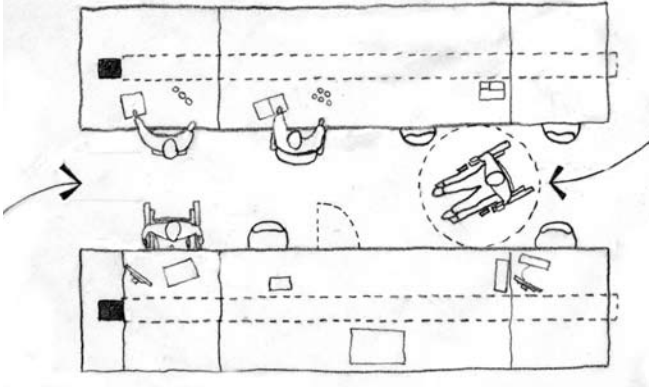
Beyond ADA - Guidelines for Universal Access

## Laboratory Layout

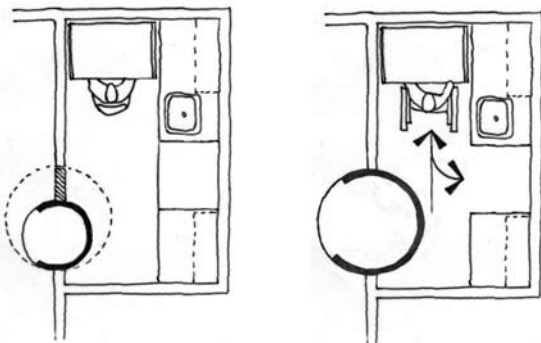
- Double loaded laboratory aisles
- Accounting for a wheel chair
- Turn around spaces in small rooms
- Darkroom doors - changeable



We have found that the “acceptable” aisle width of 36” – 48” to be unacceptable. This nominal width does not take into consideration the width of people sitting behind a desk, and the overall width of a wheel chair. People studying and working can become barriers to accessibility. Typically, in labs the 60” clearance can be too tight when dead end isles are designed.



To avoid dangerous congestion caused by seated people, we try and make laboratory aisles a minimum of 60” wide with two ways in and out. 60” insures that wheel chairs can turn around freely, but chairs and seated occupants create obstructions. Aisles with two exits help to ensure unencumbered passage in the event of an emergency, and allow easier access to workstations for all occupants.



Remodeling small spaces to allow access, can be prohibitively time consuming and expensive. In these cases, small changes make large differences. In the drawing to the left, a 36” section of counter is designed to be removed in this existing dark room to allow for a turn-around space. as for the dark room door, where this adptable solution is permitted, we have framed the wall with easily removable finish and framing sized for the larger darkroom door. We retrofit the darkroom door, to allow for wheelchair access, and the darkroom became useable with a relatively small budget.